

Eveneer is

- Reconstructed timber veneer.
- Manufactured in Italy from Poplar grown in agricultural plantations and timbers grown in sustained yield forests.
- Supplied in standard sheet sizes, providing better yields in furniture manufacture and minimizing waste.
- Even in colour and constant in pattern. No unexpected knots, splits or discolouration. Future additions will look the same, damaged panels are more easily replaced.
- Able to reproduce the world's finest woods without impact on our delicate forest regions.

Eco

Produced from Poplar grown in certified agricultural plantations.

Even

Environmentally produced from Ayous grown in sustained yield forests.

Euro

Environmentally produced from Limewood grown in managed European forests.

Technical Details

Standard Dimensions

2500/ 2800/3150mm x 620mm approx. Special dimensions can be supplied (subject to quantity)

Tolerances

Sheets can be approximately 20mm longer and 10mm wider

Nominal Thickness

0.6mm for **Eco** and **Euro** products and 0.55mm for **Even** products (tolerance +/- 0.03mm)

Glues

Urea glues have been used in the manufacturing process and therefore contain formaldehyde emissions which are less than 2.5mg/m² per hour according to EN 717/2. This has been tested and certified by an outside laboratory body called CATAS. In the production of birdseye and burr patterns the emission is more than 3.5mg/m² per hour due to more glue being used. Elton Group suggests that normal OH&S timber veneer use practices are followed when using this product.

Light Fastness & Finishing

As with natural veneers, Eveneer will change colour when subjected to ultra violet light. To minimise this change we recommend the use of a toner in the finishing system as well as sufficient amounts of UV inhibitor at a percentage recommended by your qualified polisher. Please note that greys, reds and blues are more prone to colour change due to the effects of ultra violet light and finished colour may be affected by such things as staining, polish choice, exposure to light, excessive heat in panel production and reaction to glues and other chemicals. Elton Group recommends the use of non-yellowing finishes and does not recommend the use of its veneers in areas subject to high light exposure. It is recommended that the customer run fabrication tests to determine the potential for colour change.

Colour

Eveneer is produced in block lots of up to 1300 leaves. As the product is dyed, slight colour variation can occur between different block lots, due to natural variations in the timbers and their absorption of the dyes and different dye batches. This is equivalent to the variations of colour experienced in fabrics, carpets etc. To achieve a consistent finish all veneer required for a project should be ordered from the same dye batch and the same coating systems and processes should be utilised and applied to that veneer.

Samples

Polished samples of Eveneer are not warranted as representative of the finished article. Elton Group recommends that the customer arrange for a polished sample of the veneer specified indicative of the finished product be provided by the cabinet maker responsible for the project.



Pressing the Veneer

When pressing Eveneer to any substrate, the tight (or smooth) side of the veneer should be towards the glue line.

Limit of Liability

The Eveneer product range is warranted to be free from defects in materials and workmanship. Any such defects must be reported to us within ten (10) days of date of delivery. During this warranty period we will repair, or at our option, replace, free of charge, such merchandise as shall prove to be defective. This warranty does not apply to damage resulting from accident, alteration, misuse, tampering, negligence or abuse. **Incidental and consequential damages are specifically disclaimed. All other warranties (including any warranty of merchantability or fitness for any particular purpose) are hereby excluded. The foregoing shall constitute the sole remedy of the customer.**

Elton Group Pty Ltd reserves the right to change price, lengths and discontinue products without notice at anytime.

Environment

The operational policy of the manufacturers of Eveneer is in line with the strictest European Ecological regulations

Harvesting of logs is designed to protect the environment and regenerate the species used: agricultural plantation grown Italian poplars and Ayous from Cameroon. Both the agricultural plantations and the Cameroon forests are FSC certified and operated under a sustained yield management process in which the total volume of wood harvested is never greater than the wood volume re-growth in the same area – on average less than 1 tree per hectare to maintain the best environmental balance.

There is a total utilisation of the raw materials in manufacturing

The manufacturers are dedicated to pollution free processing. At the end of the production lines is a purifying plant to prevent pollutants being released into the environment.

Eveneer has European E1 certification = formaldehyde emission of less than 0.1ppm (EN 717-1) or less than 2.5mg/m² per hour (EN 717-2). WFI and CATAS certificates can be downloaded from eltongroup.com.

Specifying Notes

Timber Veneer - Eveneer *insert veneer name*. (If FSC certification is required, please write FSC after the name.)

Contact - Elton Group 1 Brough St. Springvale Victoria Australia T 1300 133 481 F 1300 733 681 sales@eltongroup.com

Grain direction -As indicated on the drawings (with crown cut veneers you may want to note the direction and location of the crowns)

Matching - Leaves are to be *slip /book** matched. (Slip matching is generally recommended.)

Substrate and Backing - Substrate to be *MDF/Particleboard/Plywood/other** in thickness...mm. Back with a balancing veneer *face grade (G2S)/downgrade/BAMO (back at manufacturer's option)** (If FSC certification is required, please indicate.)

Edges - To be finished with a *0.5mm /1.5mm /other** mm thick matching veneer edging.
Note: Unfinished veneer must be protected from UV and water exposure

Finishing - Veneer is to be finished using isolator, sealer and top coating products engineered for wood finishing (insert finish information supplied by the polish manufacturer). Finish must include UV inhibitors in each coat. (A non-yellowing acrylic modified 2 pack polyurethane is the generally recommended finish.) All materials must be used in strict accordance with the manufacturer's instructions

Gloss Level *insert gloss level %*. *Open grain/Fully choked**

**delete as applicable*

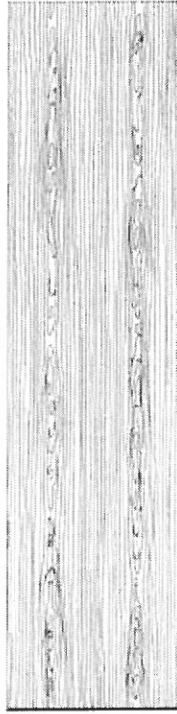


Evener Patterns

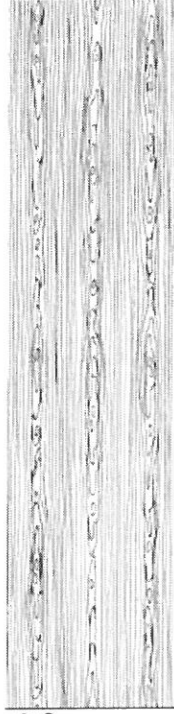
Shown in 600mm wide pattern repeats



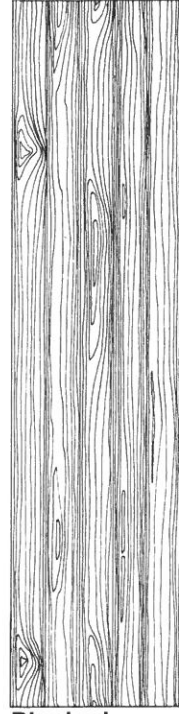
Quartered



2 Crown



3 Crown



Planked



evener[®]